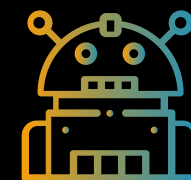


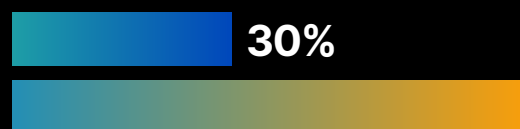


LLM Preparedness & Enterprise Adoption



STATE OF THE MARKET SURVEY

Only 30% of senior tech professionals are very prepared to run LLM projects for enterprise solutions, while 70% are only somewhat prepared or unprepared.



Top 3 reasons preventing AI projects from going from experiment to production



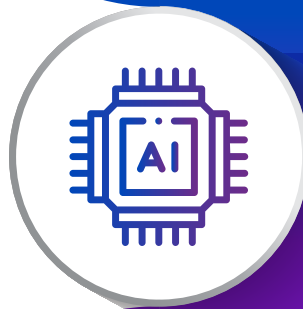
90%



According to the findings, 9 out of 10 respondents believe **fine-tuned LLMs would bring value to their organization**, with 42% attributing significant value to LLM usage.



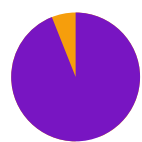
Benefits of LLMs for a specific task



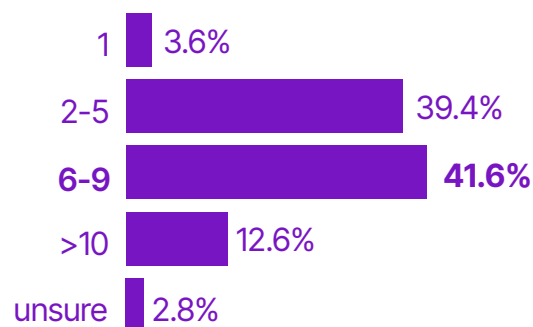
70%

70.3% of respondents plan to **initiate two or more LLM projects per year for enterprise solutions** in the next two years.

94%



93.6% said they **expect to run two or more models in the next two years**.



67%



66.5% anticipate they will have **more than 1 inference provider**. 12% were unsure.



86%

86% of very prepared respondents rate **Virtualized LLM** (with load balancing, fail over, and multi-head execution) as **very important**.

Censuswide surveyed over 500 senior tech professionals at US-based companies with 1000+ employees. Respondents were grouped into three categories of LLM preparedness based on how frequently they plan to initiate LLM projects in the next 2 years and how many models they expect to run.

